



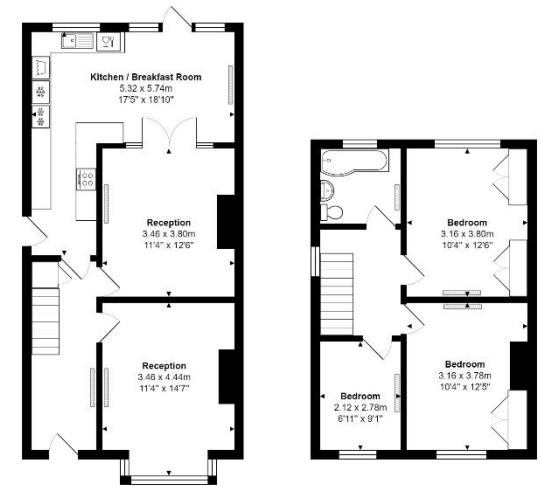
Queens Road, Felixstowe

This well presented and extended family home is ideally located in a popular residential street close to the town centre.

The accommodation and benefits comprise entrance hall, two reception rooms, extended 'L' shaped kitchen/day room, three bedrooms, bathroom, gas central heating, double glazing, private, well maintained rear garden and block paved front garden providing off road parking

Queens Road, Felixstowe IP11 7QT
£900pcm

 **Reposit**
Rent without a deposit



Total Area: 100.6 m² ... 1083 ft²
All measurements are approximate and for display purposes only